

Welcome to Middle School Science!

Silly About Systems!

Whether you are looking at the atomic structure, ecosystems or the layers of the Earth, it's all about systems! This year we will be looking through the lens of "systems" to help us focus on our science curriculum.

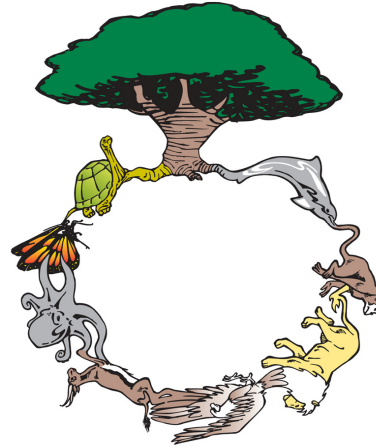
6th Grade will be looking at Earth systems; the interior of the Earth, to plate tectonics, to the rock cycle, weather and the solar system.

7th Grade will be investigating life systems starting with the building blocks of life, the cell, to body systems, classification systems and ecosystems.

8th grade will be starting with the atom itself, then moving out to chemical components, energy, and simple machines.

Assessment of stu-

dent learning will be done in a variety of ways; lab experiments, research reports, tests, quizzes and projects. Every student will be required to complete an individual **Science Fair Project** to assess their ability to apply the scientific method to an area of personal interest. Daily homework will be assigned to help students practice new skills, prepare for lab activities, and apply new knowledge to their everyday lives. **Homework** should take no longer than 20 minutes a night, depending on the ability of the student. It is due the next class period unless otherwise noted. **Late work** is accepted ONLY with an "It's Not Late" pass, which students will receive a limited number of the first



week of school. It is better to turn in an incomplete assignment on time! If a student is struggling with an assignment, please contact me BEFORE the assignment is due. This allows me the opportunity to assist the student and adjust due dates, if needed. If a student needs help with any work, I am available most days after school and in homework club once a week.

As part of the science curriculum, 6th and 7th students will participate in an extended field trip in May. 6th grade will be going to Marine Headlands and 7th grade will be visiting Yosemite. More information will be coming throughout the year.

Grade Scale

97—100%	A
94—96%	A-
90—93%	B+
86—89%	B
83—85%	B-
79—82%	C+
74—78%	C
70—73%	C-
68—69%	D+
65—66%	D
63—64%	D-
Below 63%	F



Required Daily Supplies:

- Binder/binder paper
- Pen/pencils & erasers
- Pencil sharpener
- Hole reinforcers
- 4 highlighters
- 12 colored pencils
- Assignment Book
- Completed Homework
- **Leave covered textbook AT HOME!**

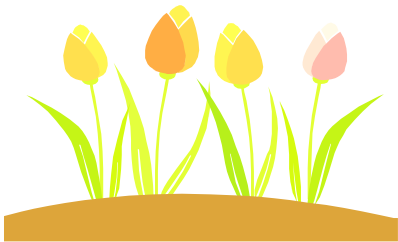
Good Shepherd Catholic
School

Ms. Garske's email
pgarske@gsschool.org

2727 Mattison Lane
Santa Cruz, CA 95065

Phone: 831-476-4000, ext. 27
E-mail: pgarske@gsschool.org

Home phone for student use ONLY:
475-5520



Rules Of The Road

Every middle school student is expected to maintain proper behavior in and outside of the classroom. The classroom rules are simple.

1) Be Respectful

- Of other people's feelings
- Of other people's belongings
- Of school equipment and materials
- Of Ms. Garske
- Of class animals
- Of other people's and your own learning needs.

2) Be Responsible

- Bring your own supplies every day
- Bring completed assignments to class
- Do your part in class and team activities
- Help other's to focus in class
- Act in a safe manner at all times
- Use class supplies only for their intended use

Garden Project

This year all middle school students will be utilizing our new Life Lab garden as a living laboratory. The students will have their own garden plot and will be working on individual as well as team experiments throughout the year. Since this will involve getting dirty, every student is encouraged to bring an apron or old shirt to wear over their uniform. Hand tools are provided by the school, but students can bring gardening gloves if they wish. Aprons and gloves will be kept in a grade level box in the science lab until needed. Please have all personal articles labeled with the students name and grade. We are also starting a school-wide recycling program. Students will be involved with collecting and sorting of recycled materials. Protective equipment will be provided for this activity.



I have read and understand
this course outline.

Student Initials

Parent Initials